

**What part of a plant is a bean?**

- A. Seed**
- B. Leaf
- C. Root

**If you put a dry bean into soil and give it water and light, what will happen?**

- A. It will grow into a bean plant**
- B. It will turn into 2 beans under the soil
- C. Nothing

**How many beans could one bean plant produce?**

- A. 10
- B. 100**
- C. 1000

**How long do beans take to grow?**

- A. 4 weeks
- B. 100 days**
- C. 2 years



**When do bean plants flower?**

- A. Before the beans appear**
- B. After the beans appear
- C. Leaves appear

**Bees like bean plants for their:**

- A. Flowers**
- B. Beans
- C. Leaves

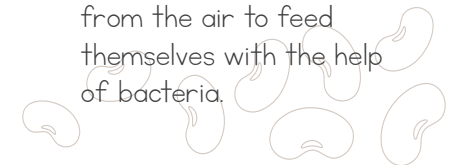
**Bean plants help keep soil loose by:**

- A. Growing a long, deep root**
- B. Special bacteria living in their roots
- C. Shallow, fragile roots

**Bean plants feed themselves using:**

- A. Caterpillars living on their leaves
- B. Special bacteria living in their roots**
- C. Bees visiting their flowers

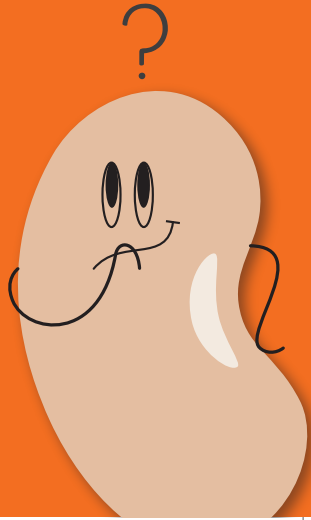
Bean plants use nitrogen from the air to feed themselves with the help of bacteria.





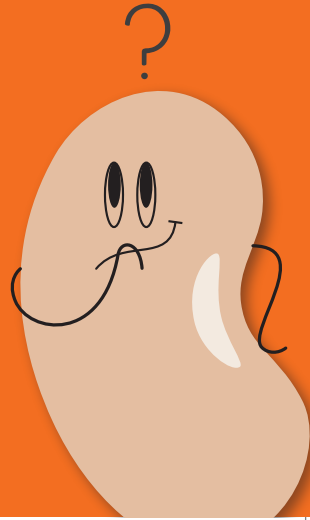
Quiz card

[www.eci.ox.ac.uk/beanmeals](http://www.eci.ox.ac.uk/beanmeals)



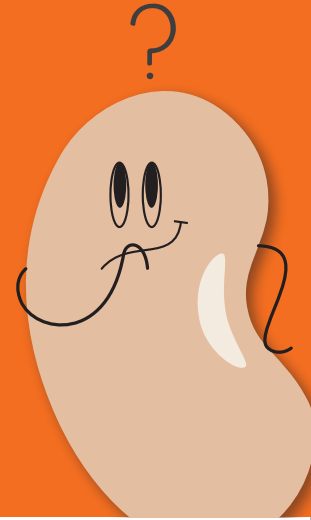
Quiz card

[www.eci.ox.ac.uk/beanmeals](http://www.eci.ox.ac.uk/beanmeals)



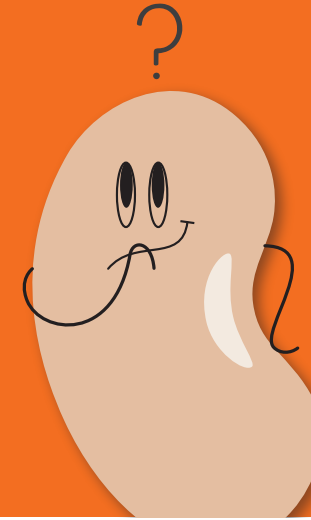
Quiz card

[www.eci.ox.ac.uk/beanmeals](http://www.eci.ox.ac.uk/beanmeals)



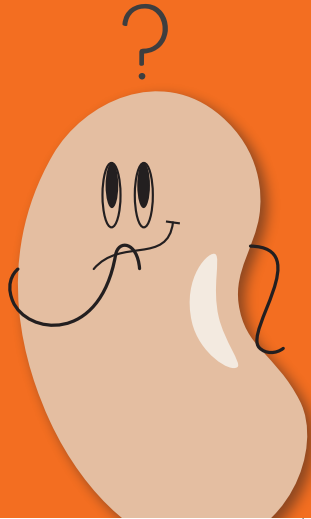
Quiz card

[www.eci.ox.ac.uk/beanmeals](http://www.eci.ox.ac.uk/beanmeals)



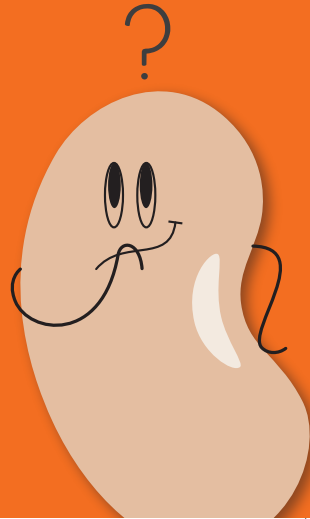
Quiz card

[www.eci.ox.ac.uk/beanmeals](http://www.eci.ox.ac.uk/beanmeals)



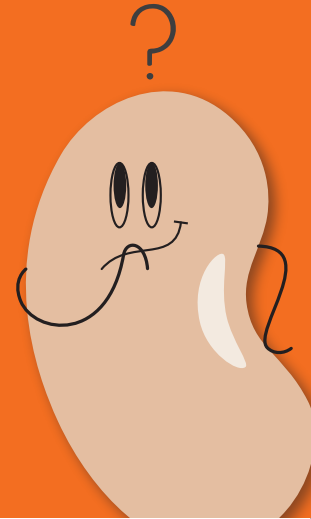
Quiz card

[www.eci.ox.ac.uk/beanmeals](http://www.eci.ox.ac.uk/beanmeals)



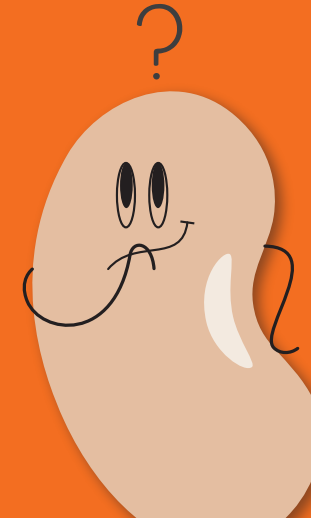
Quiz card

[www.eci.ox.ac.uk/beanmeals](http://www.eci.ox.ac.uk/beanmeals)



Quiz card

[www.eci.ox.ac.uk/beanmeals](http://www.eci.ox.ac.uk/beanmeals)



**How many bean varieties are there?**

- A. 40
- B. 400
- C. 40,000**

**Where are most of the beans used for UK baked beans grown?**

- A. South America
- B. China
- C. North America**

**How long does it take for beans to get here from North America?**

- A. 10 hours
- B. 1 day
- C. 30 days**

**Are there types of beans which you can grow in the UK?**

- A. Yes**
- B. No



**Why can't the beans which grow in North America grow here?**

**A. The plants don't like the British summer weather**

- B. British caterpillars would eat them
- C. The plants don't like British soil

**How do beans travel here from the USA?**

- A. Ship
- B. Plane and lorry
- C. Ship and lorry**

**Name a reason why it is good to eat local food**

Answers include jobs for local people, fighting climate change, good for the environment - and others!

**Which of these needs the least water to produce?**

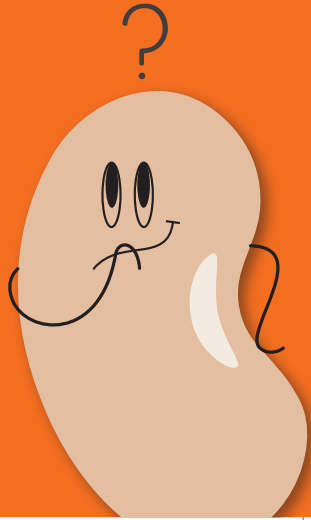
- A. Wheat
- B. Beans**
- C. Meat





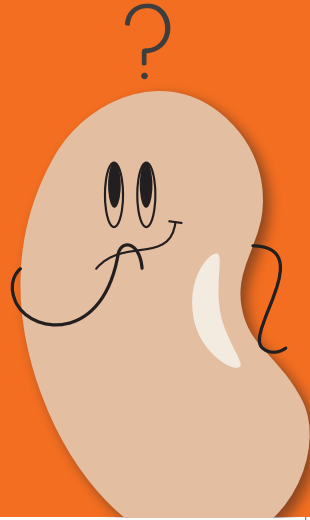
Quiz card

[www.eci.ox.ac.uk/beanmeals](http://www.eci.ox.ac.uk/beanmeals)



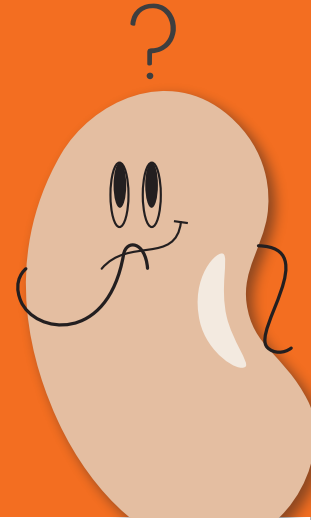
Quiz card

[www.eci.ox.ac.uk/beanmeals](http://www.eci.ox.ac.uk/beanmeals)



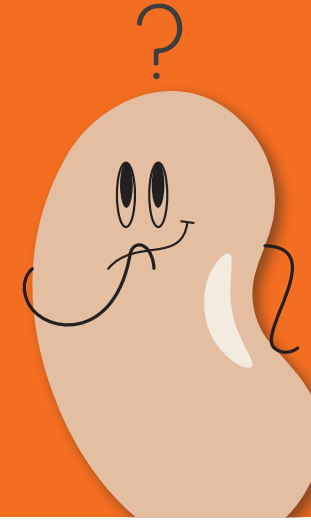
Quiz card

[www.eci.ox.ac.uk/beanmeals](http://www.eci.ox.ac.uk/beanmeals)



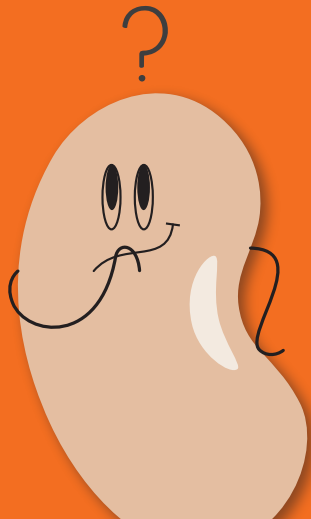
Quiz card

[www.eci.ox.ac.uk/beanmeals](http://www.eci.ox.ac.uk/beanmeals)



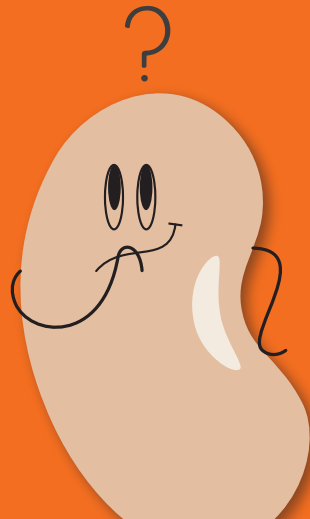
Quiz card

[www.eci.ox.ac.uk/beanmeals](http://www.eci.ox.ac.uk/beanmeals)



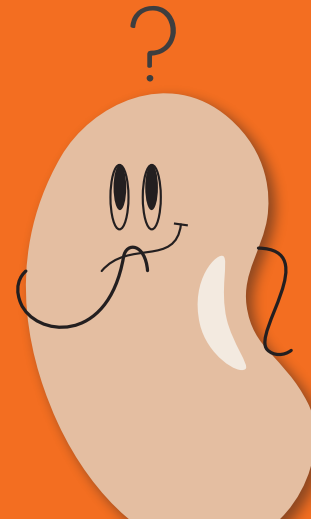
Quiz card

[www.eci.ox.ac.uk/beanmeals](http://www.eci.ox.ac.uk/beanmeals)



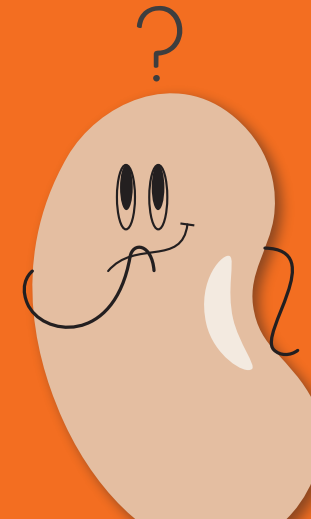
Quiz card

[www.eci.ox.ac.uk/beanmeals](http://www.eci.ox.ac.uk/beanmeals)



Quiz card

[www.eci.ox.ac.uk/beanmeals](http://www.eci.ox.ac.uk/beanmeals)



**How many of the soy beans grown in the Amazon are used to feed animals for meat?**

- A. 10%
- B. 50%
- C. 80%**



**Does farming beans or beef produce fewer greenhouse gas emissions?**

- A. Beans**
- B. They are the same
- C. Beef



**Compared to beef, beans need how much water to produce:**

- A. 10% as much**
- B. 50% as much
- C. Twice as much



**Baked beans are:**

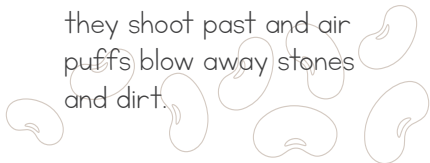
- A. Cooked then canned
- B. Cooked in the cans with the sauce**



**What removes dirt and stones from beans in factories?**

- A. People
- B. Air puffs**
- C. Grabbers

Lasers scan beans as they shoot past and air puffs blow away stones and dirt.



**What is used to clean beans in factories?**

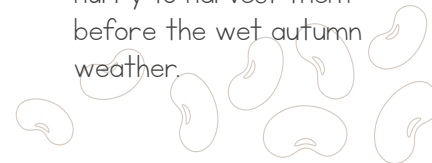
- A. Brushes**
- B. Dishcloths
- C. Vacuum cleaners



**Are beans dry or fresh when they are harvested?**

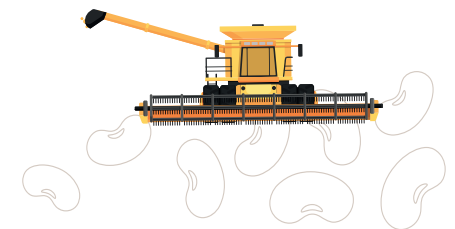
Dry.

Beans dry out on the plant before they are harvested! Farmers hurry to harvest them before the wet autumn weather.



**What is this? (Cover the answer when you show the person!)**

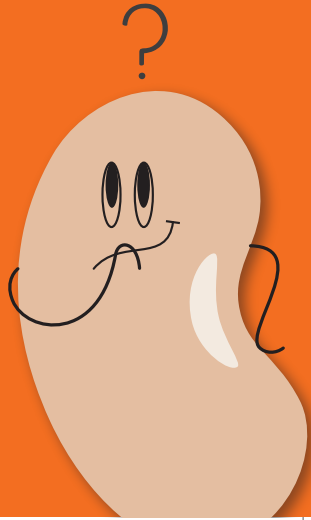
- A. Plough
- B. Tractor
- C. Combine harvester**





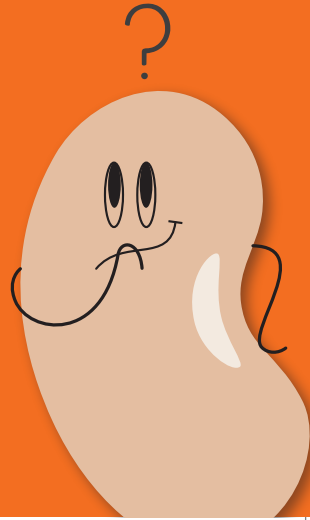
Quiz card

[www.eci.ox.ac.uk/beanmeals](http://www.eci.ox.ac.uk/beanmeals)



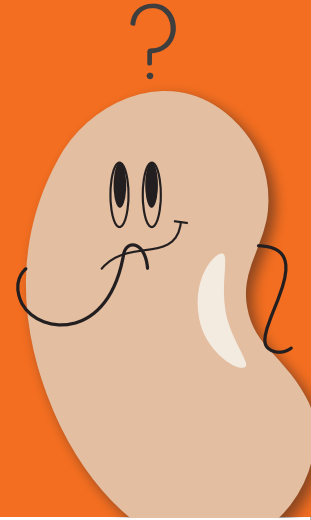
Quiz card

[www.eci.ox.ac.uk/beanmeals](http://www.eci.ox.ac.uk/beanmeals)



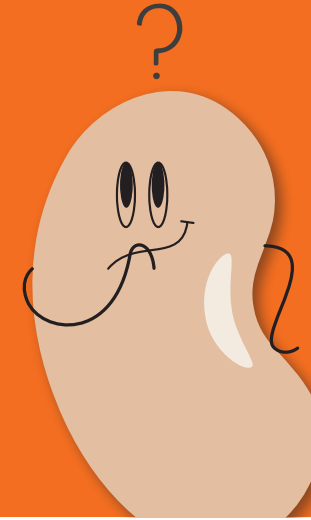
Quiz card

[www.eci.ox.ac.uk/beanmeals](http://www.eci.ox.ac.uk/beanmeals)



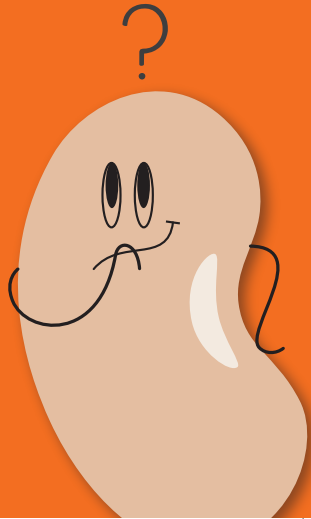
Quiz card

[www.eci.ox.ac.uk/beanmeals](http://www.eci.ox.ac.uk/beanmeals)



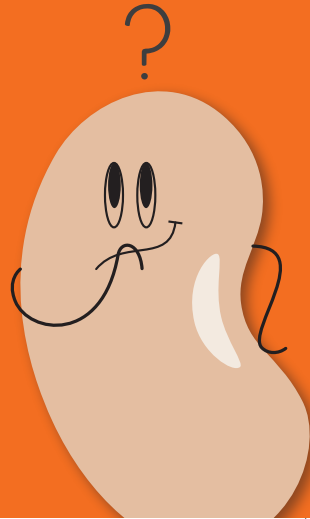
Quiz card

[www.eci.ox.ac.uk/beanmeals](http://www.eci.ox.ac.uk/beanmeals)



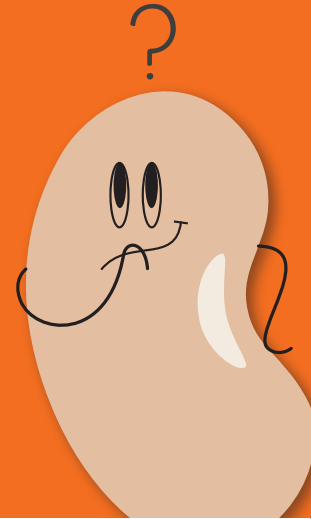
Quiz card

[www.eci.ox.ac.uk/beanmeals](http://www.eci.ox.ac.uk/beanmeals)



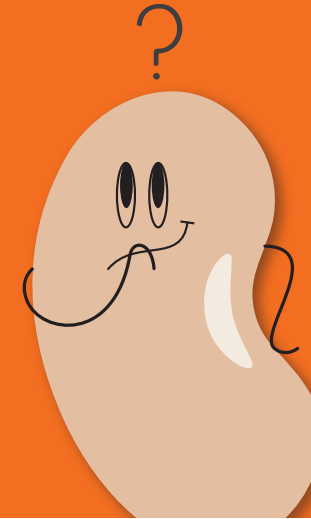
Quiz card

[www.eci.ox.ac.uk/beanmeals](http://www.eci.ox.ac.uk/beanmeals)



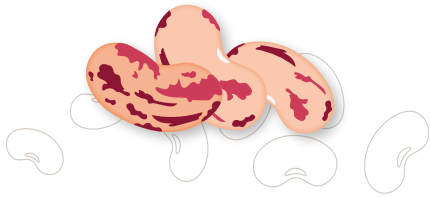
Quiz card

[www.eci.ox.ac.uk/beanmeals](http://www.eci.ox.ac.uk/beanmeals)



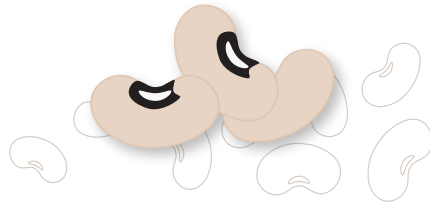
**What type of bean is this? (Cover the answer when you show the person!)**

- A. Pinto**
- B. Kidney
- C. Black-eyed



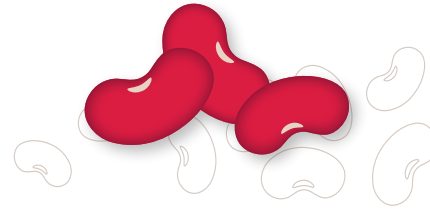
**What type of bean is this? (Cover the answer when you show the person!)**

- A. Pinto
- B. Kidney
- C. Black-eyed**



**What type of bean is this? (Cover the answer when you show the person!)**

- A. Mung
- B. Kidney**
- C. Black-eyed



**What type of bean is this? (Cover the answer when you show the person!)**

- A. Pinto
- B. Kidney
- C. Haricot**



**Why are beans a good crop for farmers to grow?**

- A. They can be stored if they do not sell
- B. They are good for the soil
- C. Leftovers from crops can be eaten by animals
- D. All of these**



**Which of these foods can be made by processing beans?**

- A. Crisps
- B. Flour
- C. Brownies
- D. All of these**



**After harvesting the beans, what is the next stage?**

- A. Sowing
- B. Threshing
- C. Cleaning**



**In the production of canned baked beans, what happens during the 'seaming' stage?**

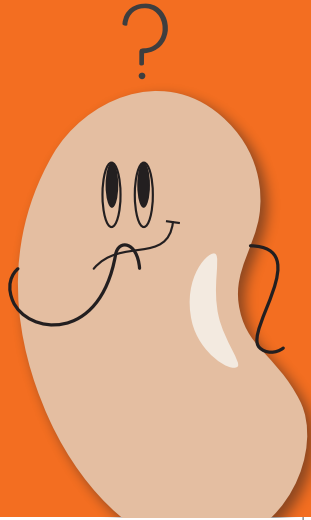
- A. Sauce is added
- B. The can is sealed tight**
- C. A label is glued to the can





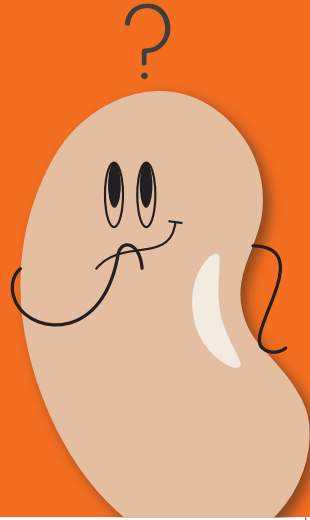
Quiz card

[www.eci.ox.ac.uk/beanmeals](http://www.eci.ox.ac.uk/beanmeals)



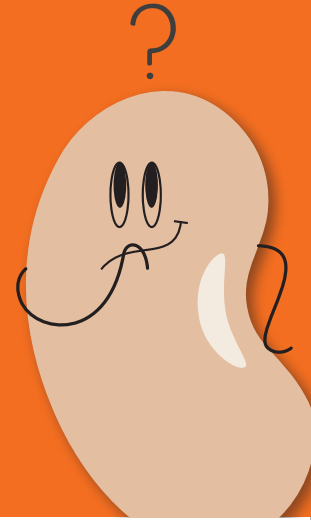
Quiz card

[www.eci.ox.ac.uk/beanmeals](http://www.eci.ox.ac.uk/beanmeals)



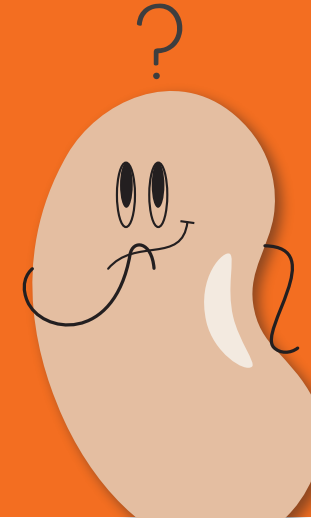
Quiz card

[www.eci.ox.ac.uk/beanmeals](http://www.eci.ox.ac.uk/beanmeals)



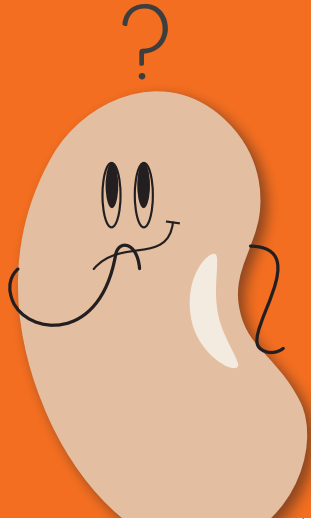
Quiz card

[www.eci.ox.ac.uk/beanmeals](http://www.eci.ox.ac.uk/beanmeals)



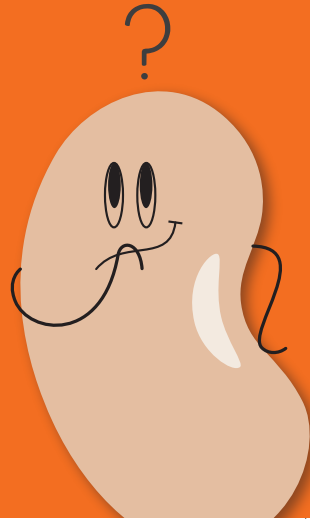
Quiz card

[www.eci.ox.ac.uk/beanmeals](http://www.eci.ox.ac.uk/beanmeals)



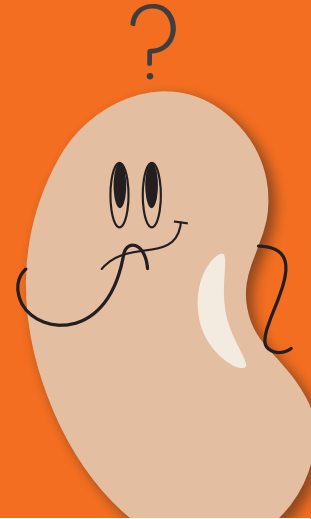
Quiz card

[www.eci.ox.ac.uk/beanmeals](http://www.eci.ox.ac.uk/beanmeals)



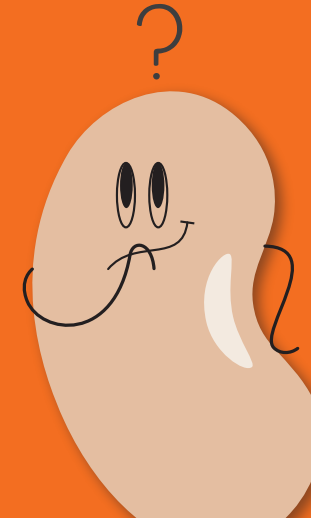
Quiz card

[www.eci.ox.ac.uk/beanmeals](http://www.eci.ox.ac.uk/beanmeals)



Quiz card

[www.eci.ox.ac.uk/beanmeals](http://www.eci.ox.ac.uk/beanmeals)





**Which continent imports the most canned beans?**

- A. Europe**
- B. North America
- C. Asia

**Approximately how many cans of baked beans are sold every day in the UK?**

- A. 10,000
- B. 1 million
- C. 2 million**

**How much baked beans does the average person in the UK buy each week in comparison with other canned beans?**

- A. The same amount
- B. Twice as much
- C. Three times as much**

**What is the fibre in beans good for?**

- A. Making you feel full
- B. Keeping your tummy healthy
- C. Both**



**Beans count as one of your five-a-day.**

- A. True**
- B. False

**Beans can be used to make:**

- A. Curries
- B. Lasagna
- C. Pizza sauce
- D. All of these**

**What's your favourite meal with beans?**

**What colour is a mung bean?**

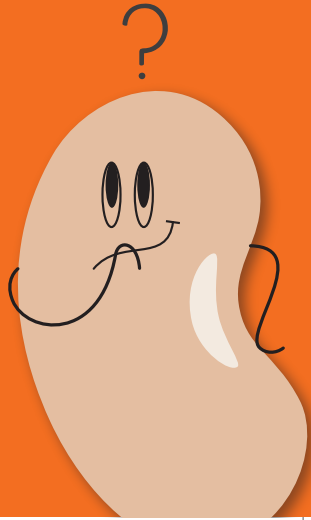
- A. Black
- B. Red
- C. Green**





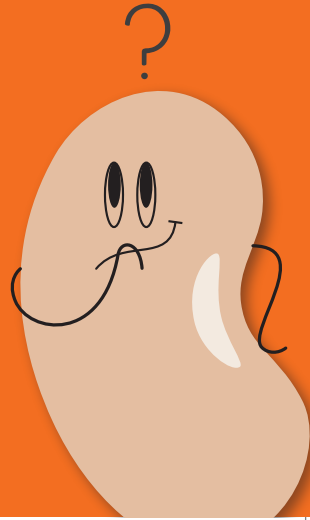
Quiz card

[www.eci.ox.ac.uk/beanmeals](http://www.eci.ox.ac.uk/beanmeals)



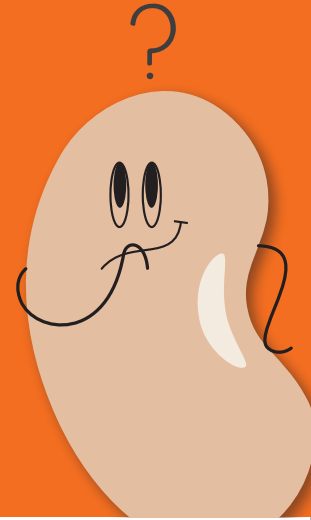
Quiz card

[www.eci.ox.ac.uk/beanmeals](http://www.eci.ox.ac.uk/beanmeals)



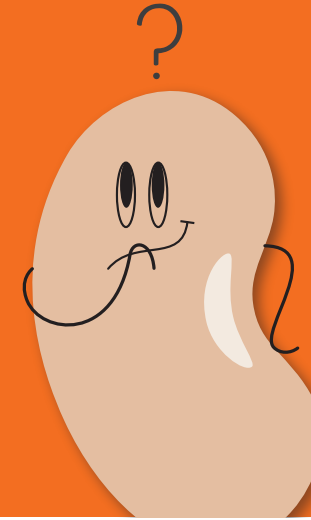
Quiz card

[www.eci.ox.ac.uk/beanmeals](http://www.eci.ox.ac.uk/beanmeals)



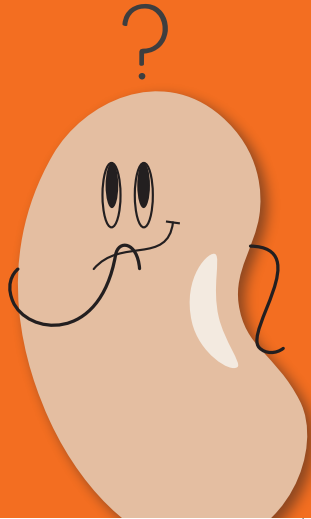
Quiz card

[www.eci.ox.ac.uk/beanmeals](http://www.eci.ox.ac.uk/beanmeals)



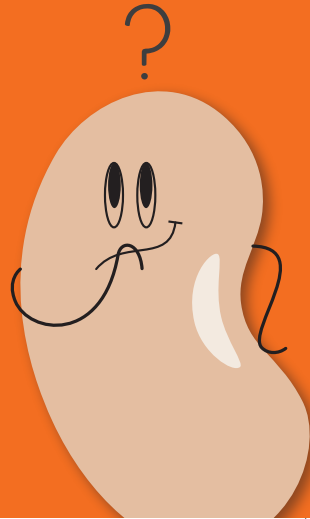
Quiz card

[www.eci.ox.ac.uk/beanmeals](http://www.eci.ox.ac.uk/beanmeals)



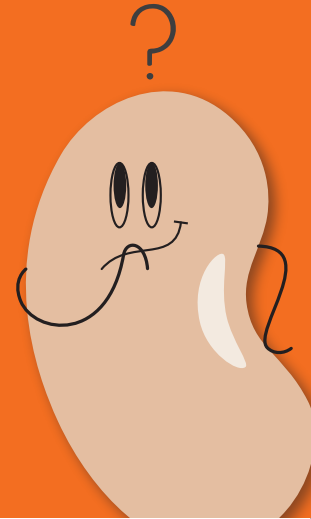
Quiz card

[www.eci.ox.ac.uk/beanmeals](http://www.eci.ox.ac.uk/beanmeals)



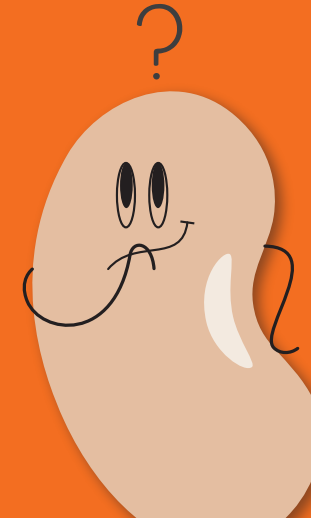
Quiz card

[www.eci.ox.ac.uk/beanmeals](http://www.eci.ox.ac.uk/beanmeals)



Quiz card

[www.eci.ox.ac.uk/beanmeals](http://www.eci.ox.ac.uk/beanmeals)



**Which beans are used in baked beans?**

A. Kidney beans

**B. Haricot beans**

C. Green beans

**Name 3 types of beans**

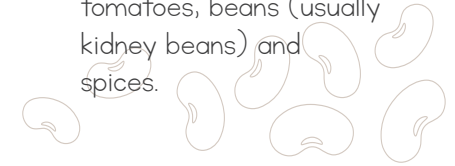
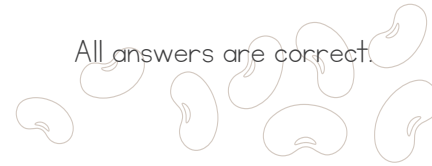
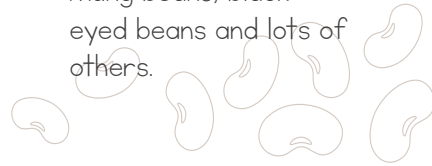
Answers include pinto beans, kidney beans, haricot beans, green beans, black beans, mung beans, black-eyed beans and lots of others.

**What's the last bean you ate?**

All answers are correct.

**Name three ingredients that go into a bean chilli.**

Answers include peppers, onions, tomatoes, beans (usually kidney beans) and spices.



**Name three ingredients you need to make bean burgers.**

**Do some baked beans contain added sugar?**

**A. Yes**

B. No

**In your diet, do beans count as a vegetable or protein?**

A. Vegetable

B. Protein

**C. Both**

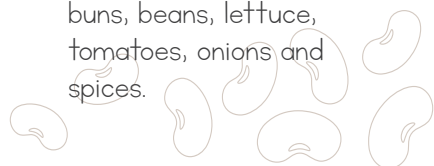
**What nutrients are beans particularly high in?**

A. Vitamin C and healthy fats

**B. Protein, iron, zinc and fibre**

C. Omega-3, magnesium and calcium

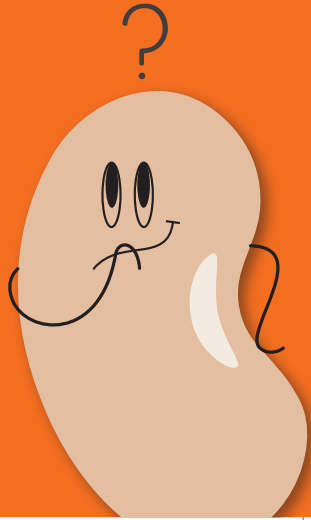
Answers include buns, beans, lettuce, tomatoes, onions and spices.





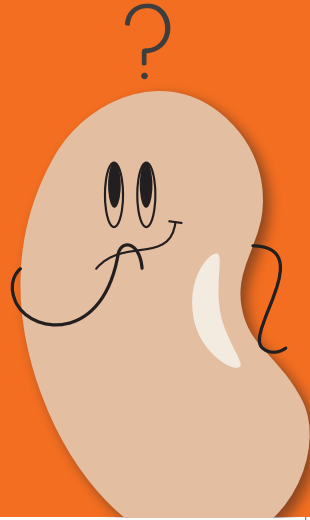
Quiz card

[www.eci.ox.ac.uk/beanmeals](http://www.eci.ox.ac.uk/beanmeals)



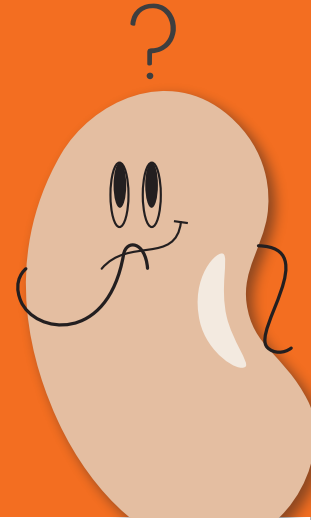
Quiz card

[www.eci.ox.ac.uk/beanmeals](http://www.eci.ox.ac.uk/beanmeals)



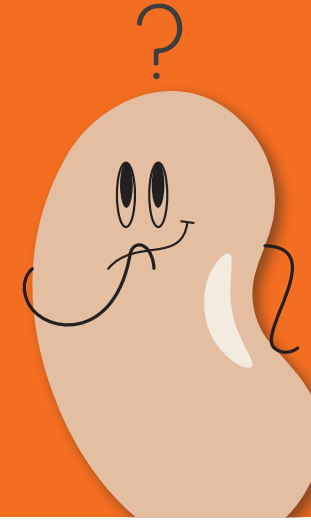
Quiz card

[www.eci.ox.ac.uk/beanmeals](http://www.eci.ox.ac.uk/beanmeals)



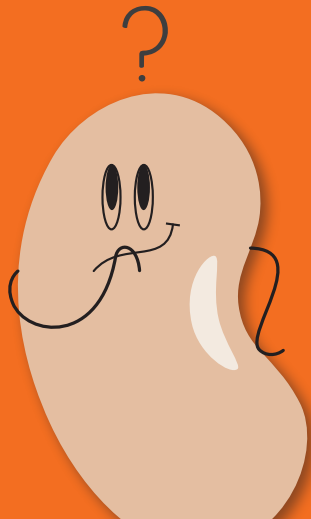
Quiz card

[www.eci.ox.ac.uk/beanmeals](http://www.eci.ox.ac.uk/beanmeals)



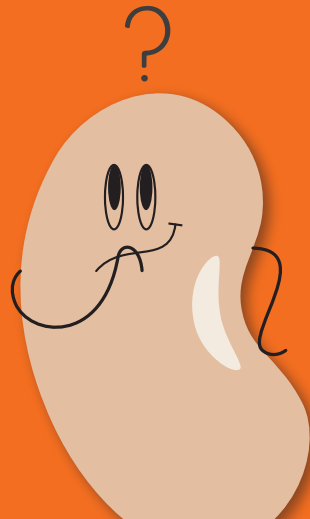
Quiz card

[www.eci.ox.ac.uk/beanmeals](http://www.eci.ox.ac.uk/beanmeals)



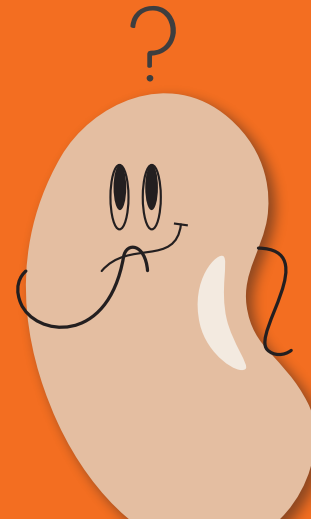
Quiz card

[www.eci.ox.ac.uk/beanmeals](http://www.eci.ox.ac.uk/beanmeals)



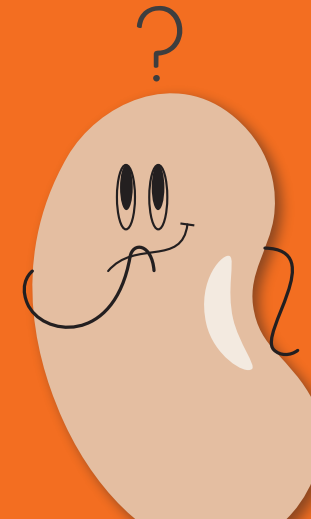
Quiz card

[www.eci.ox.ac.uk/beanmeals](http://www.eci.ox.ac.uk/beanmeals)



Quiz card

[www.eci.ox.ac.uk/beanmeals](http://www.eci.ox.ac.uk/beanmeals)



**Are beans good for our guts?**

**A. Yes, beans feed good bacteria in our guts**

B. Yes, beans clean out our guts

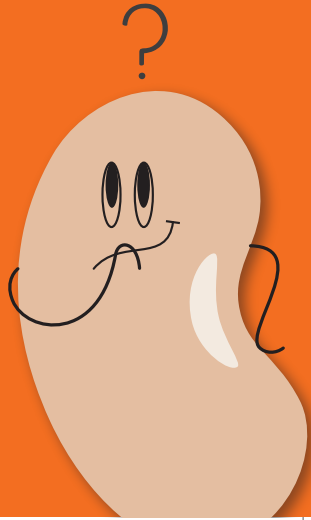
C. No, beans are bad for our guts





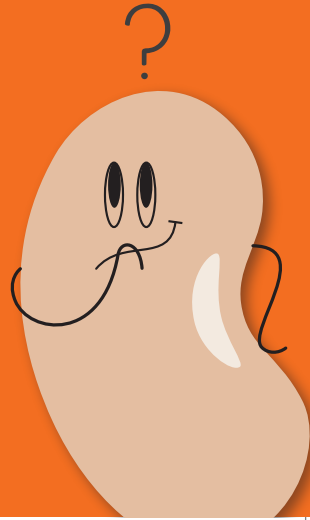
Quiz card

[www.eci.ox.ac.uk/beanmeals](http://www.eci.ox.ac.uk/beanmeals)



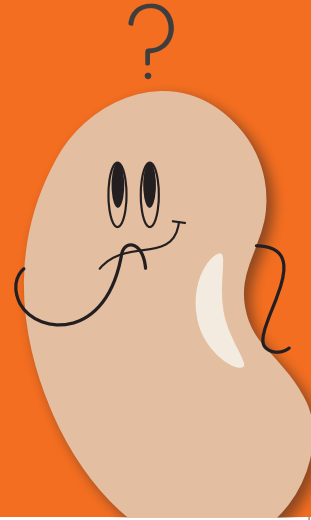
Quiz card

[www.eci.ox.ac.uk/beanmeals](http://www.eci.ox.ac.uk/beanmeals)



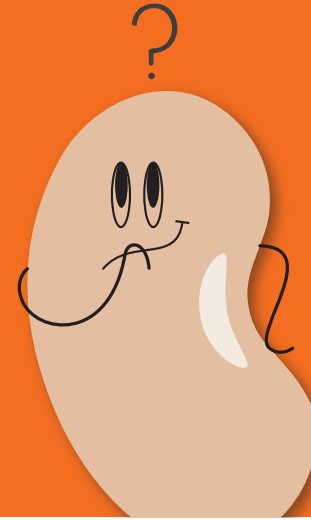
Quiz card

[www.eci.ox.ac.uk/beanmeals](http://www.eci.ox.ac.uk/beanmeals)



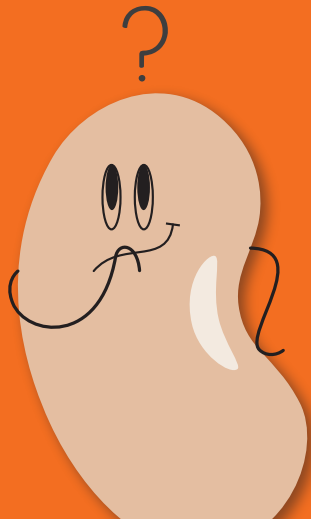
Quiz card

[www.eci.ox.ac.uk/beanmeals](http://www.eci.ox.ac.uk/beanmeals)



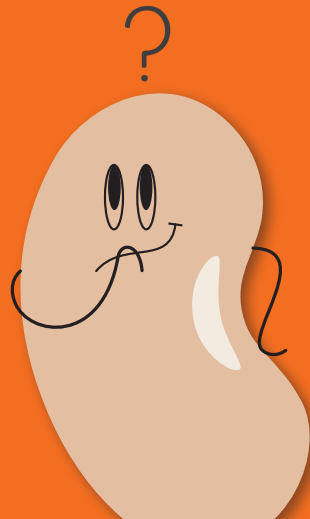
Quiz card

[www.eci.ox.ac.uk/beanmeals](http://www.eci.ox.ac.uk/beanmeals)



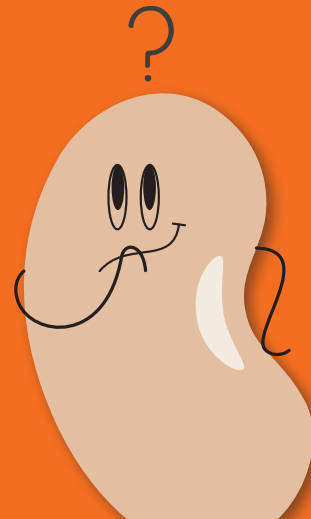
Quiz card

[www.eci.ox.ac.uk/beanmeals](http://www.eci.ox.ac.uk/beanmeals)



Quiz card

[www.eci.ox.ac.uk/beanmeals](http://www.eci.ox.ac.uk/beanmeals)



Quiz card

[www.eci.ox.ac.uk/beanmeals](http://www.eci.ox.ac.uk/beanmeals)

